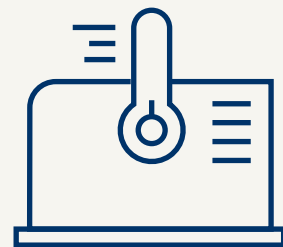
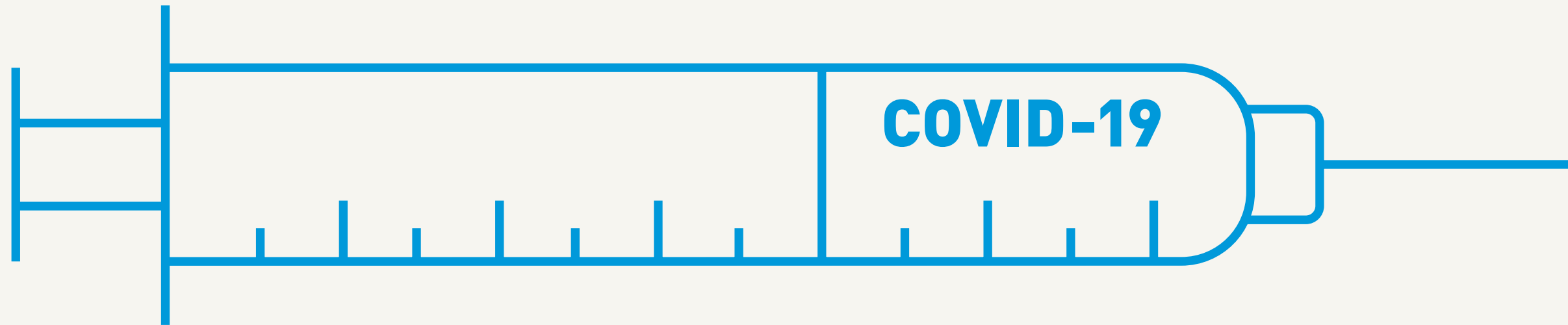


# The COVID-19 vaccine logistics

#ForWhenItMattersTheMost



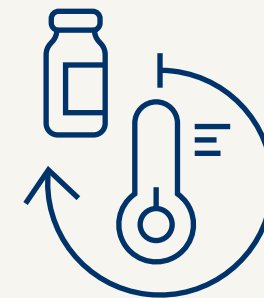
Vaccines require transport and storage in cold temperatures: deep frozen, frozen and 2-8 C



Temperature deviations may affect the vaccine efficacy



Vaccine logistics must be managed through a temperature controlled supply chain



A temperature-controlled supply chain safeguards the integrity of the vaccine along with security



Certified logistics experts manage the temperature controlled supply chain